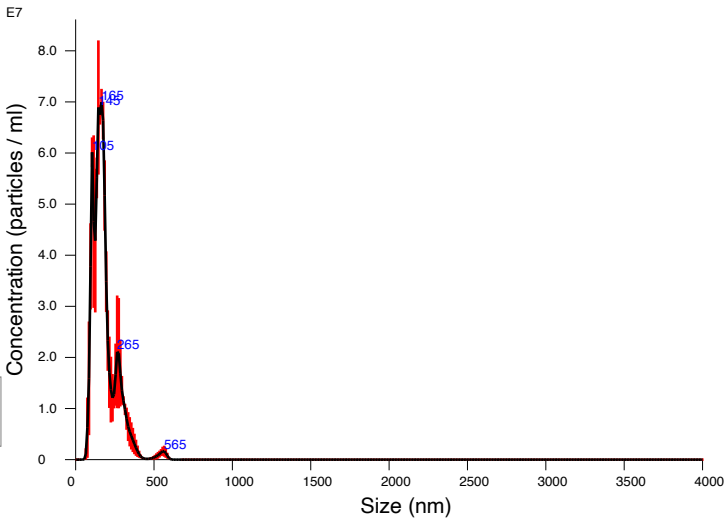


FTLA Concentration / Size graph for Experiment:
Capture 2022-09-23 12-49-04



Averaged FTLA Concentration / Size for Experiment:
Capture 2022-09-23 12-49-04
Error bars indicate + / -1 standard error of the mean

<div><div>Included Files</div><div>Capture 2022-09-23 12-49-22 Capture 2022-09-23 12-49-57 Capture 2022-09-23 12-50-25</div><div><div>Details</div><div><div>NTA Version:NTA 3.4 Build 3.4.4</div><div>Script Used:SOP Standard Measurement 04-43-57PM 02~</div><div>Time Captured:12:49:04 23/09/2022</div><div>Operator:Ruth</div><div>Pre-treatment:</div><div>Sample Name:hom. = 5m (3)</div><div>Diluent:</div><div>Remarks:</div></div><div><div>Capture Settings</div><div><div>Camera Type:sCMOS</div><div>Laser Type:Blue405</div><div>Camera Level:12</div><div>Slider Shutter:1200</div><div>Slider Gain:146</div><div>FPS18.7</div><div>Number of Frames:374</div><div>Temperature:22.0 °C</div><div>Viscosity:(Water) 1.0 cP</div><div>Dilution factor:Dilution not recorded</div></div><div><div>Analysis Settings</div><div><div>Detect Threshold:12</div><div>Blur Size:Auto</div><div>Max Jump Distance:Auto: 8.9 - 10.3 pix</div></div></div></div></div></div>	<div><div>Results</div><div><div>Stats: Merged Data</div><div><div>Mean:183.0 nm</div><div>Mode:164.1 nm</div><div>SD:79.4 nm</div><div>D10:104.2 nm</div><div>D50:164.2 nm</div><div>D90:288.7 nm</div></div><div><div>Stats: Mean +/- Standard Error</div><div><div>Mean:183.2 +/- 5.0 nm</div><div>Mode:160.6 +/- 8.1 nm</div><div>SD:77.4 +/- 8.4 nm</div><div>D10:104.3 +/- 4.1 nm</div><div>D50:164.1 +/- 3.3 nm</div><div>D90:295.7 +/- 10.9 nm</div></div><div><div>Concentration:</div><div><div>8.64e+08 +/- 4.26e+07 particles/ml</div><div>47.2 +/- 2.3 particles/frame</div><div>51.8 +/- 2.0 centres/frame</div></div></div></div></div></div>
---	--